

BETWEEN THE SEA AND THE BLUE SKY



Turquesa residencial  
EL VERGEL



 902 40 26 40

[www.viviendasjardin.com](http://www.viviendasjardin.com)



VIVIENDAS  
JARDÍN



## A TURQUOISE SEA

THERE IS A PLACE WHERE CRYSTAL CLEAR WATERS AND BLUE SKIES SURROUND YOUR SENSES.  
CALM BEACHES WHERE YOU CAN FEEL THE COSTA BLANCA WARMTH, WHERE YOU CAN WALK ALONG THE SHORE AS THE EVENING ARRIVES.

MARINE VILLAGES WHERE YOU CAN WALK THROUGH THE SMALL STREETS OF VERGEL AS YOU EXPLORE THE SURROUNDINGS.  
A SMALL QUIET TOWN CLOSE TO DENIA, WHERE THE MEDITERRANEAN ACQUIRES A UNIQUE TURQUOISE COLOUR.

## NEW SENSATIONS TO DISCOVER

In TURQUESA Residential a life full of new sensations await you.

Immersed in the Mediterranean surrounded by light in constant equilibrium with nature. A calm and peaceful life just interrupted by the distant sound waves.

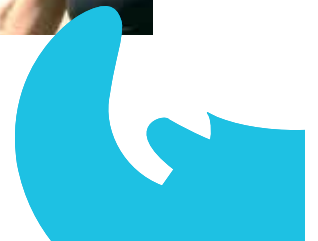
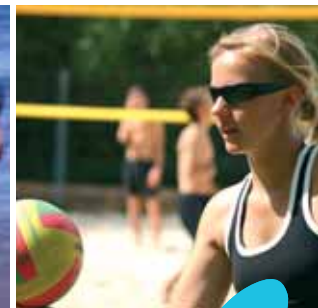




## NATURE AND SEA

TURQUESA Residential is the type of place you've always dreamed of. This is one of the last quiet places on the Mediterranean coast. The well-known "Les Deveses" beach very close to the development boasts fine golden sand where you can practice all types of water sports. For nature lovers, El Vergel is situated close to the "Segaria" 6 km mountain range with its recreation park.

El Vergel has a Mediterranean climate with mild temperatures during the winter and hot during the summer. All the services are close by such as banks, chemists, supermarkets and specialist shops, etc. El Vergel is the first town we find as we come through the N-332 motorway from Valencia, 98 km from Alicante and 50 km from Benidorm.





## YOUR SPOT ON THE MEDITERRANEAN

A calm residential development of forty-two 3 bed townhouses with private parking next to one of Denia's finest beaches.

You can choose between several property types. All with terraces, solariums, private gardens and parking. The communal areas all have gardens, swimming pool and playground.



# AN OASIS OF TRANQUILLITY

YOU CAN FEEL THE WARM SUN AS YOU ENJOY THE MEDITERRANEAN LIFESTYLE FROM YOUR TERRACE.  
YOU CLOSE YOUR EYES ONLY TO FEEL THE TRANQUIL SEA BREEZE. THE CHILDREN CAN ENJOY THE PLAYGROUND AREA ALONG WITH GARDENS  
AND SWIMMING POOL. A PEACEFUL SEA ENVELOPES EVERYTHING AROUND YOU GIVING TIME TO ENJOY ALL WITH YOUR FAMILY.



We have selected materials of the highest quality to offer you a home that makes your life easier. Alarm system, air conditioning hot/cold, an kitchens of the highest quality.

#### PROPERTY MODEL A

101.27 m<sup>2</sup> de SURFACE AREA CONSTRUCTED

281.09 m<sup>2</sup> de PLOT

3 BEDROOMS

3 BATHROOMS

214.95 m<sup>2</sup> de PRIVATE GARDEN

TERRACE AND PERGOLA





### PROPERTY MODEL C

93.78 m<sup>2</sup> de SURFACE AREA CONSTRUCTED

76.16 m<sup>2</sup> de PLOT

3 BEDROOMS

3 BATHROOMS

PRIVATE GARDEN

TERRACE AND PERGOLA

